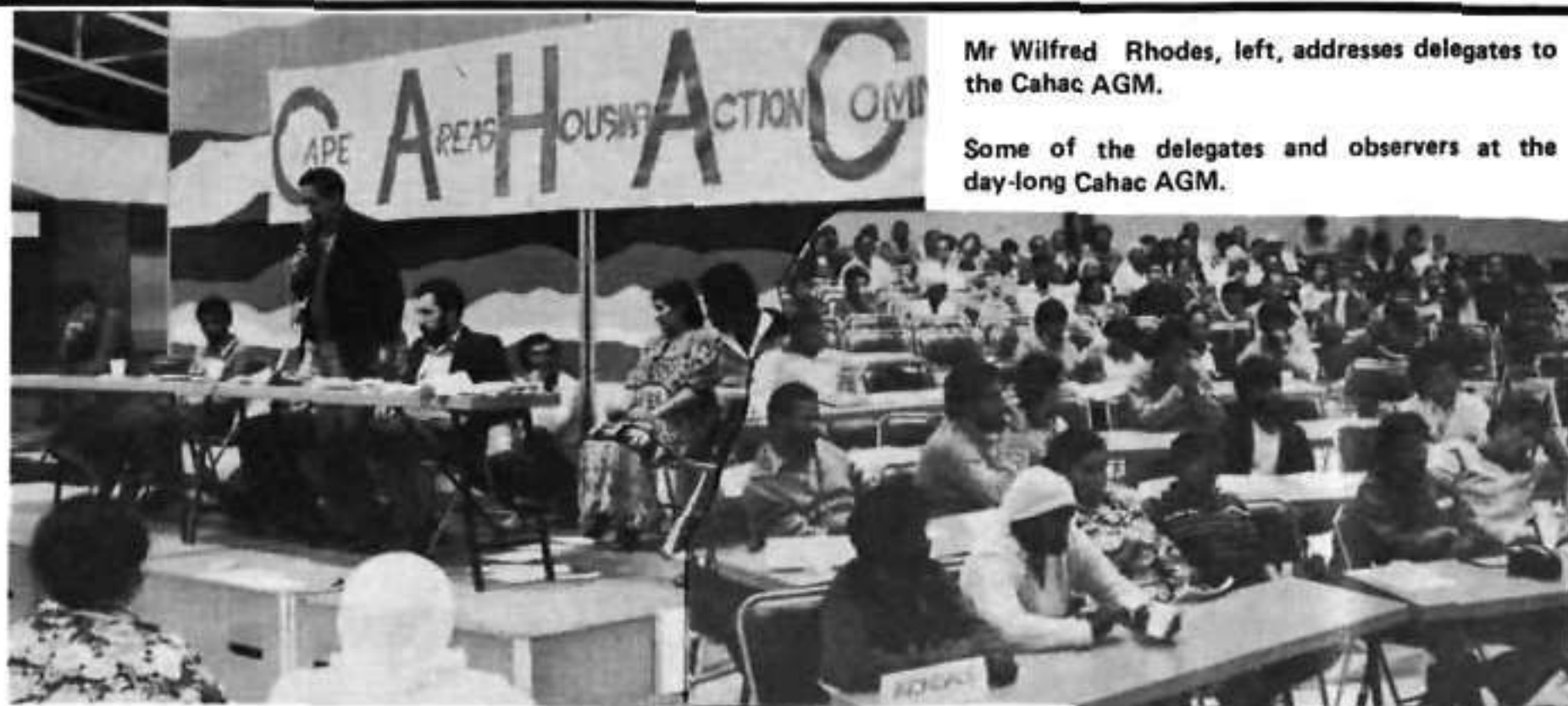


# Build our organisations

Sunday, 11 July was a historic day for the umbrella civic body, Cahac. The first annual general meeting of the organisation, representing 21 civic bodies, was held in Lentegeur, Mitchells Plain. Newly formed committees in Parkwood Estate and Hout Bay applied for membership. With time, it is expected that other committees presently working in areas will seek membership. *Cahac can only grow and should grow - this was the message at the day-long AGM.*

By joining your local civic organisation, you are joining Cahac because this organisation is our parent body.



Mr Wilfred Rhodes, left, addresses delegates to the Cahac AGM.

Some of the delegates and observers at the day-long Cahac AGM.

# UMBRELLA BODY FOR PLAIN

MITCHELLS PLAIN has at last got a people-based umbrella body which will co-ordinate the struggles of all those who live in the huge Group Area township.

The body is the Mitchells Plain Co-ordinating Committee

(MPCC) and has a loose Federal structure.

Each of the Plain's seven mass-based residents' bodies in the seven areas - Eastridge, Lentegeur, Portlands, Rocklands, Tafelsig,

Westridge and Woodlands - elected from their ranks two members on the MPCC.

One of the two area representatives is "permanent" - which means he serves a full term of office of about a year.

Westridge and Woodlands - elected from their ranks two members on the MPCC.

One of the two area representatives is "permanent" - which means he serves a full term of office of about a year.

dents Association (COMPRA) was not accepted by the people because it was undemocratic and many of its officials were eager to work with the enemies of the people.

It also refused to take up issues affecting the people.

On such issue was the Electricity Due Date. Council demanded that electricity accounts be paid a few days before most people received their salaries. Late payment led to a 10 percent fine. Because of the inconvenience of the payment date most people had to pay the fine, giving the council lots of extra money.

## Campaign

The Rocklands Residents Association, who had withdrawn from Compra, the Portlands Residents Association which was never an affiliate, and a number of concerned individuals decided to tackle the problem of the due date.

They formed themselves into the Electricity Petition Committee (EPC).

EPC waged a tireless and determined campaign from page 1

## Motor strike

Macusa is opposed to Naawu's participation in the Industrial Council system.

The system has been criticised by a number of independent unions.

There is a difference however in the PE motor industrial council - the union participating ensures full involvement of workers on the factory floor in decision-making.

## Elected

The other is rotating - the areas are able to change this representative from month to month, or even from meeting to meeting, to enable as many people as possible to gain experience at MPCC level.

The local residents' groups keep their autonomy and will seek direct affiliation to CAHAC and to GRASS-ROOTS.

The 14 member (the number will grow as new areas are opened up) Co-ordinating Committee elects six working officials. These are secretary, assistant secretary, treasurer, Grassroots sales co-ordinator, Publications Committee convenor and Workshop Committee convenor.

The first elections for these posts were held on July 6, 1982.

An earlier structure set up for Mitchells Plain, the Combined Mitchells Plain Resi-

dents Association (COMPRA) was not accepted by the people because it was undemocratic and many of its officials were eager to work with the enemies of the people.

After the victory celebration the question remained: What now?

## What now?

Because such an effective organising group had been established, it was decided to continue until a mass-based representative body could be established.

Soon EPC was officially representing Mitchells Plain on organisations like the Cape Areas Housing Action Committee (CAHAC).

Democratic peoples organisations were started in Woodlands, Westridge and the new areas, Eastridge and Tafelsig.

They joined EPC and the stage was set for the EPC to convert into the MPCC.

But there were a number of issues to be settled first. What should the name be? Should the umbrella body have unitary or federal structure?

A unitary structure would mean a strong centralised body with binding decision making powers and who would have branches under it in the various areas.

A Federal structure would be a grouping of autonomous mass-based bodies who carried full responsibilities in their own areas. These people's organisations would come together on a regional basis to

discuss and co-ordinate matters affecting Mitchells Plain as a whole.

EPC organised a week-end long workshop to tackle the structure question.

At the end of the meeting opinion was heavily in favour of the Federal structure but no decision was taken as it was felt that the matter should first be discussed by the areas.

All the area committees came out in favour of the federal structure. On June 18 a joint meeting of area representatives formally adopted the Federal structure for the new body.

The next week the name Mitchells Plain Co-ordinating Committee was adopted.

On July 8 the first election was held.

from page 1

## CAHAC AGM

nity around matters which are important to people."

"We are not trying to build a fancy Cahac structure somewhere in the air - organisation must be built in the community," he said.

Mr Rhodes said the goal of organisations must not only be to fight high rents and bus-fares. "We must see these problems as being

only the smoke. Our work must be to put out the fire which causes the smoke. We must wipe out from this society all the causes of our hardship."

At the end of the all-day meeting held at the Lentegeur Civic Centre in Mitchells Plain, nine people were elected to serve on the steering committee.

### Instant

## Dry Cleaners

6 TOWN CENTRE, HANOVER PARK

FOR EXPERT DRY CLEANING OF:

All garments  
Curtains  
Chair Covers  
Blankets  
Bedspreads

PLUS

Complete Laundry Service  
Garment repairs & alterations  
Shoe Repairs

**Elite**  
MEAT MARKET  
Phone 67-2129  
KLIPFONTEIN ROAD, RYLANDS ESTATE  
ATHLONE

## BELMOR VIDEO HIRE

CNR. WOOD AND JOHNSON ROAD  
RYLANDS ESTATE (opp. Habibia Orphanage)

LATEST FILMS AND  
1982 WORLD CUP MATCHES  
AVAILABLE

\* \*

KAPRES WELDING

For all burglar bars & fences

PHONE 633-1555

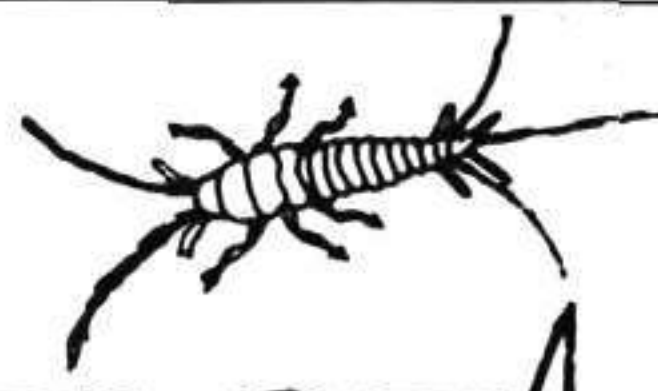
HAPPY EID MUBARAK TO ALL MUSLIMS

PEST

# UKAY

CONTROL  
Ph. 73-1107

# We kill 'em...



# FAST!